



# Simpla - TC 1000

## High Performance Cutter

### Technical Specifications

#### Paper Specifications

Speed (99 positions)	330 ft/min	100 m/min
Feeding	One paper web	
Weight	60 - 250 gsm, 16# bond to 90# cover	
Multicopy form	350 gsm max, 131.5# cover max.	
Web width	4" - 20" (20.5" special)	102 - 508 mm (521 mm special)
Form width max	19" (19.7" special)	485 mm (500 mm special)
Form length	2" 5/6" - 99"	72 - 2515 mm
Cut strip	programmable with oscillating blade cartridge - TC 1010 1/6" with vertical blade cartridge - TC 1020 7,8 mm with vertical blade cartridge - TC 1030	
Side trimming	up to 1" per side	up to 25 mm per side
Height level from floor	38.2" - 47.6" TC 1005 Option	970 - 1210 mm TC 1005 Option

#### Size and Weight

Length	29.5"	750 mm
Width	35"	850 mm
Height	41" - 50.4"	1040 - 1280 mm
Weight	353 lb	160 kg

#### Electrical & Environmental

Power	230V/208V, 50/60 Hz, 1,5 KVA
-------	------------------------------

#### Speed (cuts per hour)

CARTRIDGE	TC 1010	TC 1010	TC 1020	TC1030
Cut type	Strip Cut, Dual Cut	Single Cut	Strip Cut, Single Cut	Strip Cut, Single Cut
Height form 4"	17.000	32.000	30.000	30.000
Height form 8"	14.000	24.000	22.000	22.000
Height form 12"	12.000	20.000	18.000	18.000

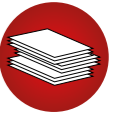
#### Simpla Pinless Configurations

SIMPLA	TC 1010	TC 1020	TC 1030	TC 1002	TC 1003
TC 1012	X			X	
TC 1013	X				X
TC 1022		X		X	
TC 1023		X			X
TC 1032			X	X	
TC 1033			X		X



# TC 1000

## High Performance Cutter



### SIMPLA - TC 1000

developed to link Digital Printers  
and to work "stand-alone"

- ✓ High speed, up to 20.000 cuts per hour
- ✓ Base on wheels with blocking device
- ✓ Height adjustment paper level device

#### Main features include:

- » Unique cartridge design: the cross blade cartridges and the side trimming cartridges are removable and interchangeable for quick and easy on site maintenance and for quick application changeover.
- » Oscillating cross blade cartridge with high precision (1/96") and high durability.
- » Vertical cross blade cartridge (3 blades system) for single stroke 1/6" strip cut.
- » Vertical cross blade cartridge (3 blades system) for single stroke 7,8 mm strip cut.

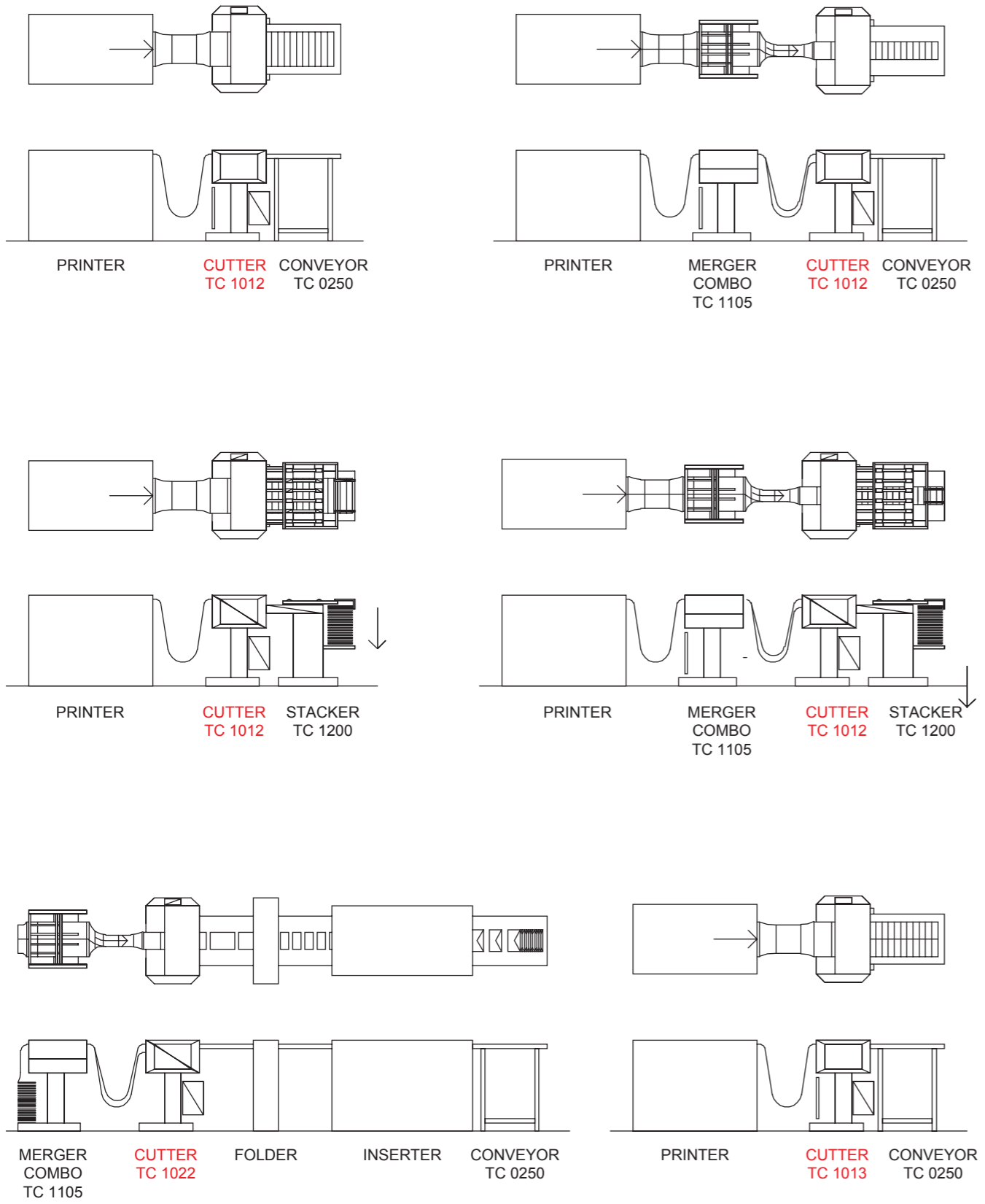
- » Paper loop interface for direct connection to laser printers.
- » Up to 99 cutting program memory.
- » Display and keyboard for programming, information, service.

Global service and around-the-clock support help ensure our reputation as the industry's reliability leader. Our products increase productivity, cut labor and paper costs, and even make new applications possible - Tecnau solutions truly empower digital print to help you do more with less.



Europe	Italy	+39 0125 631678	info.it@tecnau.com
	Sweden	+46 372 256 00	info.se@tecnau.com
Americas	USA	+1 978 608 0500	info.us@tecnau.com
Asia Pacific	China	+86 159 00710147	info.cn@tecnau.com
	Singapore	+65 6793 9478	info.sg@tecnau.com

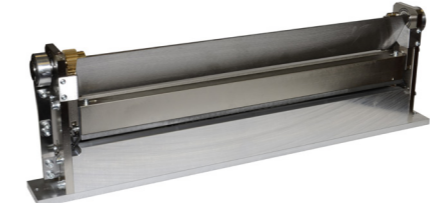
**CONFIGURATION EXAMPLES:**



**OSCILLATING BLADE CARTRIDGE**  
TC 1010



**SIDE TRIMMING CARTRIDGE**  
TC 1002



**VERTICAL BLADE CARTRIDGE**  
TC 1020 (strip cut 1/6")



**SIDE TRIMMING & CENTRAL KNIFE CARTRIDGE**  
TC 1003



**VERTICAL BLADE CARTRIDGE**  
TC 1030 (strip cut 7,8 mm)



Cutter Products